

Unirac Apps for iPhone.
Now Available on the App Store.



U-Clinometer



QR-Code Reader

See Page 2



SOLARMOUNT

SUNFRAME

RAPIDRAC G10

UNIRAC LARGE
ARRAY (U-LA)

SOLARMOUNTi

MASTER PRICE LIST



June 1, 2011

ISO 9001:2008
CERTIFIED
ISO 14001:2004

Contents

New From Unirac	1
Rail and Mounting Systems.....	3
Module Mounting.....	8
Accessories.....	12
Roof Attachments	21

Introduction

Thank you for choosing Unirac’s PV mounting solutions.

Price and specifications are subject to change without notice. However, Unirac strives to maintain open communications with you, our most valued partner. In most cases, newsletters are sent out by e-mail 30 days in advance of any part number or pricing changes. Please make sure your server and/or e-mail software is set up to receive e-mails from any address at unirac.com.

All prices are List Price. Contact your distributor for your actual pricing.

Unirac welcomes input concerning the accuracy and user-friendliness of this publication.

Please send any suggestions to marketing@unirac.com.

Unirac: Mobile 2.0

Get complete support for Unirac's trusted products anytime, anywhere. Unirac Mobile 2.0 is a smarter, sleeker way to experience a world of product content beyond the installation instructions featured in our industry first Unirac Mobile website launched in 2008.

Simply visit <http://www.unirac.com> from your mobile device. You will automatically receive the mobile version of our website, specially formatted to fit on a smaller screen.

What's New in Version 2.0

- Immerse yourself in full product support for all residential, commercial and utility solutions
- Redesigned interface: New Look and Feel
- Optimized technical support library and ability to play videos
- Distributor Locator and Contact List



New From Unirac

Prices and specifications are subject to change without notice.

Page

1

Unirac Smartphone Apps

U-Clinometer
Free Download



The U-Clinometer is an inclinometer tool specifically developed for the PV racking industry. Two digital read-outs allow you to easily determine angle, when your device is placed on edge, or pitch, when your device is laid flat.

Unirac QR-Code Reader
Free Download



The Unirac QR-Code Reader gives you instant access to selected content from Unirac.com. Simply point your device's camera at a QR Code appearing on a Unirac ad or trade show display. The appropriate content will immediately download to your device, with no typing, clicking, or complicated web address entry!

These smartphone apps are brought to you by Unirac, Inc., the industry leader in PV mounting solutions for residential, commercial, and utility projects. It's part of the Unirac Digital Advantage, bringing you the tools you need - anywhere you need them and anytime you need them!

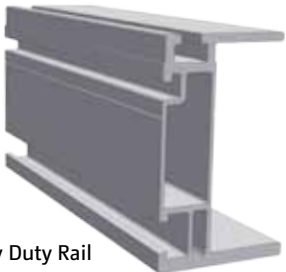
For application support, please contact AppSupport@unirac.com.

**Apple iPhone and iTouch compatible as of May 2011. Coming soon for Android and other smartphone platforms.*

SOLARMOUNT

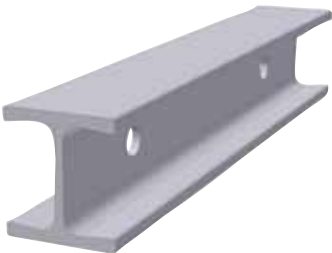


SolarMount Rail
PAGE 4



SolarMount Heavy Duty Rail
PAGE 4

SOLARMOUNTi



SOLARMOUNTi 1.0 & 2.5 Rail
PAGE 5

SUNFRAME



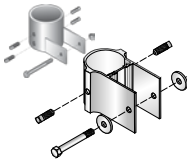
SunFrame Shared Rail System
PAGE 5

RAPIDRAC G10

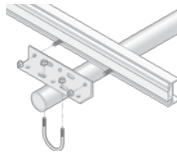
Ballast
Frame
(with or
without
module
brackets)
PAGE 6



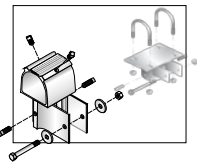
U-LA



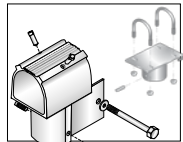
Slider—Aluminum
(right) or steel options
PAGE 7



Rail mounting
bracket
PAGE 7



Front leg cap — Aluminum
(left) or steel options
PAGE 7



Rear leg cap — Aluminum
(left) or steel options
PAGE 7

Prices and specifications are subject to change without notice.

Prices and specifications are subject to change without notice.

SOLARMOUNT

SolarMount® standard rails - DISTRIBUTOR PACK

Aluminum - Clear Anodized and Dark Bronze Anodized (BLACK)

CLR = Clear Anodized

DRK = Dark Bronze Anodized (BLACK)

Part No.	Description	Package Quantity	Ship Wt. Lbs.	List Price Ea.
310132C	SM RAIL 132" CLR	144	1440.00	\$72.00
310168C	SM RAIL 168" CLR	144	1728.00	\$92.00
310208C	SM RAIL 208" CLR	144	2016.00	\$112.00
310240C	SM RAIL 240" CLR	144	2304.00	\$132.00
310240D	SM RAIL 240" DRK	144	2304.00	\$158.00

SolarMount® standard rails - ONE PACK = BUNDLE OF 8 RAILS

PRO-PAK: Standard rail bundles consist of 8 rails. Bundles listed here do not include L-feet or hardware.

CLR = Clear Anodized

Part No.	Description	Package Quantity	Ship Wt. Lbs.	List Price Ea.
310132C-B	SM RAIL 132" CLR	8	72.00	\$76.50
310168C-B	SM RAIL 168" CLR	8	100.00	\$96.25
310208C-B	SM RAIL 208" CLR	8	120.00	\$116.25
310240C-B	SM RAIL 240" CLR	8	143.00	\$134.63

SolarMount® HD (heavy duty) rails

Mill Finish aluminum

MILL = Mill Finish

Part No.	Description	Package Quantity	Ship Wt. Lbs.	List Price Ea.
410144M	SMHD RAIL 144" MILL	1	15.00	\$146.00
410168M	SMHD RAIL 168" MILL	1	17.00	\$166.00
410204M	SMHD RAIL 204" MILL	1	20.00	\$201.00
410240M	SMHD RAIL 240" MILL	1	25.00	\$235.00

SOLARMOUNTi

SOLARMOUNTi® standard rails - MILL FINISH

Part No.	Description	Package Quantity	Ship Wt. Lbs.	List Price Ea.
010144M	SM-I 1.0 RAIL, 144" MILL	50	200.00	\$37.90
011144M	SM-I 2.5 RAIL, 144" MILL	20	130.00	\$52.65
011192M	SM-I 2.5 RAIL, 192" MILL	20	175.00	\$68.50

SUNFRAME

SunFrame rail

Select finish to match PV module frames.

CLR = Clear Anodized

DRK = Dark Bronze Anodized (BLACK)

Part No.	Description	Package Quantity	Ship Wt. Lbs.	List Price Ea.
210192C	SF RAIL 192", THREADED, CLR	8	144.00	\$171.63
210192D	SF RAIL 192", THREADED, DRK	8	144.00	\$197.63

Prices and specifications are subject to change without notice.

RAPIDRAC G10

RAPIDRAC G10 - SPECIAL ORDER
 PRICING IS THE SAME FOR ALL PART NUMBERS

Note: See RapidRac Configuration Guide for help on configuring, laying out, and ordering a RapidRac.

Part No.	Description	Package Quantity	Ship Wt. Lbs.	List Price Ea.
310351-xxxx	RAPIDRAC, FRAME ONLY	1	8.00	\$104.00
310355-xxxx	RR ASSY, FRAME & BRKTS	1	12.00	\$208.00

We custom make RapidRac to the exact specifications of the module to be installed. Every RapidRac part number ordered from Unirac must have the correct four (4) digit suffix (replaces xxxx in the table above) as that is what identifies the module. *Unirac's website has the RapidRac suffixes for many modules at <http://www.unirac.com>, in the Technical Support section. Look for "RapidRac Part Number List (PDF)." In order to get those suffixes precisely correct, Unirac requires:*

The Unirac distributor to supply the applicable manufacturer's module data sheet at the time of placing the order. A Unirac contact will respond with the proper suffix to order, if not known in advance, or confirm the one chosen.

To repeat, **all RapidRac orders must be accompanied by a module data sheet commonly found at the module manufacturer's website.** We will manufacture your RapidRac to match the data sheet submitted to us, so be sure the correct one is supplied exactly.

Prices and specifications are subject to change without notice.

U-LA

RAIL MOUNTING AND PIPE STRUCTURE COMPONENTS

Available to fit 2" inside-diameter pipe (in zinc-plated steel and mill-finish aluminum) and 3" inside-diameter pipe (zinc-plated steel only). Pipe is installer provided.

All braces and brackets are mill-finish aluminum.

AL = Mill-Finish Aluminum

STL = Zinc-Plated Steel

Part No.	Description	Package Quantity	Ship Wt. Lbs.	List Price Ea.
403200C	ULA BRACE, 2"@ 7 FT, AL	1	8.00	\$68.00
403201C	ULA BRACE, 2"@ 10.5 FT, AL	1	12.00	\$99.00
403202C	ULA BRACE, 2"@ 14 FT, AL	1	16.00	\$129.00
403203C	ULA BRACE, 2"@ 21 FT, AL	1	24.00	\$185.00
403210P	ULA PIPE CAP, 2", PLASTIC, GREY	1	1.00	\$1.07
403211C	ULA FRONT CAP, 2", AL	1	2.00	\$43.00
403211G	ULA FRONT CAP, 2", STL	1	4.00	\$71.00
403213C	ULA RAIL BRACKET, 2", AL	1	2.00	\$18.99
403214C	ULA REAR CAP, 2", AL	1	2.00	\$43.00
403214G	ULA REAR CAP, 2", STL	1	4.00	\$55.00
403215C	ULA SLIDER, 2", AL	1	2.00	\$20.48
403215S	ULA SLIDER 1 FLANGE, 2", STL	1	4.00	\$41.00
403216S	ULA THREADED FOOT, 2", STL	1	4.00	\$41.00

Part No.	Description	Package Quantity	Ship Wt. Lbs.	List Price Ea.
403301C	ULA BRACE, 3" @ 7 FT, AL	1	13.00	\$109.00
403302C	ULA BRACE, 3" @ 10.5 FT, AL	1	19.00	\$158.00
403303C	ULA BRACE, 3" @ 14 FT, AL	1	25.00	\$207.00
403311G	ULA FRONT CAP, 3", STL	1	5.00	\$100.00
403313G	ULA RAIL BRACKET, 3", AL	1	2.00	\$22.18
403314G	ULA REAR CAP, 3", STL	1	5.00	\$83.00
403315S	ULA SLIDER 1 FLANGE, 3", STL	1	4.00	\$69.00
403316S	ULA THREADED FOOT, 3", STL	1	5.00	\$89.00

Rail and Mounting Systems

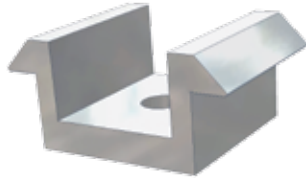
Prices and specifications are subject to change without notice.

SOLARMOUNT
SOLARMOUNTi
U-LA

SolarMount Clamps
PAGE 10

SOLARMOUNTi Clamps
PAGE 11

U-LA Clamps
PAGE 10



Mid clamp



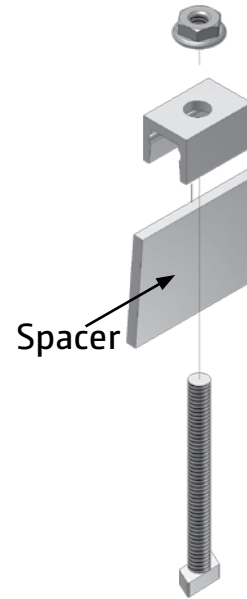
End clamp

**All Module Sizes,
EXCEPT G & L**

In Size G, end clamps employ a spacer, but are otherwise identical to mid clamps.



Size G
Mid clamp



Size G
End clamp

Spacer

Bottom mounting clip



Clips for all modules
with mounting holes in the
back of the frame.



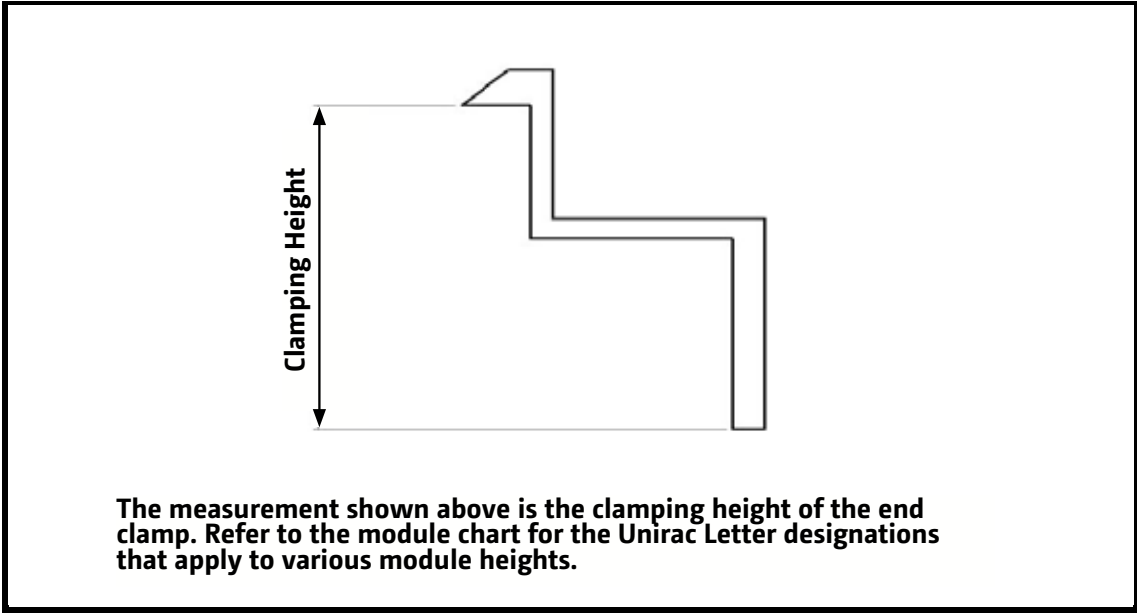
Size L mounting
clamp
for Sanyo bifacial
modules on shared
SolarMount rail
Sanyo HIP/HIT xxx DA3
Bifacial.

Prices and specifications are subject to change without notice.

SOLARMOUNT SOLARMOUNTi U-LA

Top Mount Sizing

Unirac Letter	Module Thickness		Bolt Length		
	Millimeter	Inches			
A	24 - 26	0.94 - 1.02		2	
B	30 - 32	1.18 - 1.26		2	
C	34 - 36	1.34 - 1.42		2	
D	38 - 40	1.50 - 1.57		2 1/2	
K	39 - 41	1.54 - 1.61		2 1/2	
J	41 - 43	1.61 - 1.69		2 1/2	
F	45 - 47	1.77 - 1.85		2 1/2	
M	47 - 49	1.85 - 1.93		2 1/2	
E	50 - 52	1.97 - 2.05		2 1/2	
N	57 - 59	2.24 - 2.32		2 1/2	
H	Sanyo lipped modules			1 1/2	SolarMount only
G	Sharp lipped modules				SolarMount only



Module Mounting

Prices and specifications are subject to change without notice.

SOLARMOUNT U-LA

TOP AND BOTTOM MOUNTING CLAMPS

CLR = Clear Anodized

DRK = Dark Bronze Anodized (BLACK)

W/HDW = Includes appropriate T-Bolts or Hex Head Bolts and Flange Nuts

Part No.	Description	Package Quantity	Ship Wt. Lbs.	List Price Ea.
302001C	SM END CLAMP - SIZE A, W/HDW, CLR	20	4.00	\$2.22
302002C	SM END CLAMP - SIZE B, W/HDW, CLR	20	4.00	\$2.22
302003C	SM END CLAMP - SIZE C, W/HDW, CLR	20	4.00	\$2.22
302003D	SM END CLAMP - SIZE C, W/HDW, DRK	20	4.00	\$2.87
302004C	SM END CLAMP - SIZE D, W/HDW, CLR	20	4.00	\$2.22
302004D	SM END CLAMP - SIZE D, W/HDW, DRK	20	4.00	\$2.87
302005C	SM END CLAMP - SIZE E, W/HDW, CLR	20	4.00	\$2.22
302005D	SM END CLAMP - SIZE E, W/HDW, DRK	20	4.00	\$2.87
302006C	SM END CLAMP - SIZE F, W/HDW, CLR	20	4.00	\$2.22
302006D	SM END CLAMP - SIZE F, W/HDW, DRK	20	4.00	\$2.87
302007D	SM END CLAMP - SIZE G, W/HDW, DRK	20	4.00	\$2.95
302008C	SM END CLAMP - SIZE J, W/HDW, CLR	20	4.00	\$2.22
302008D	SM END CLAMP - SIZE J, W/HDW, DRK	20	4.00	\$2.87
302009C	SM END CLAMP - SIZE K, W/HDW, CLR	20	4.00	\$2.22
302009D	SM END CLAMP - SIZE K, W/HDW, DRK	20	4.00	\$2.87
302010C	SM END CLAMP - SIZE L, W/HDW, CLR	20	4.00	\$3.80
302011C	SM END CLAMP - SIZE M, W/HDW, CLR	20	4.00	\$2.22
302012C	SM END CLAMP - SIZE N, W/HDW, CLR	20	4.00	\$2.22

Part No.	Description	Package Quantity	Ship Wt. Lbs.	List Price Ea.
302101C	SM MID CLAMP - SIZES ABCDK, W/HDW, CLR	20	4.00	\$2.48
302101D	SM MID CLAMP - SIZES ABCDK, W/HDW, DRK	20	4.00	\$3.42
302103C	SM MID CLAMP - SIZES EFJMN, W/HDW, CLR	20	4.00	\$2.48
302104D	SM MID CLAMP - SIZES EFJMN, W/HDW, DRK	20	4.00	\$3.42
302105D	SM MID CLAMP - SIZE G, W/HDW, DRK	20	4.00	\$3.55
302106D	SM MID CLAMP - SIZE H, W/HDW, DRK	20	4.00	\$3.55

Part No.	Description	Package Quantity	Ship Wt. Lbs.	List Price Ea.
302000C	SM BOTTOM MOUNT CLAMP W/HDW, CLR	20	3.00	\$1.30

Prices and specifications are subject to change without notice.

SOLARMOUNTi

TOP MOUNTING CLAMPS

CLR = Clear Anodized

Part No.	Description	Package Quantity	Ship Wt. Lbs.	List Price Ea.
002001C	SM-I END CLAMP - SIZE A, CLR	20	2.00	\$2.77
002002C	SM-I END CLAMP - SIZE B, CLR	20	2.00	\$2.77
002003C	SM-I END CLAMP - SIZE C, CLR	20	2.00	\$2.77
002004C	SM-I END CLAMP - SIZE D, CLR	20	2.00	\$2.77
002005C	SM-I END CLAMP - SIZE E, CLR	20	2.00	\$2.77
002006C	SM-I END CLAMP - SIZE F, CLR	20	2.00	\$2.77
002007C	SM-I END CLAMP - SIZE J, CLR	20	2.00	\$2.77
002008C	SM-I END CLAMP - SIZE K, CLR	20	2.00	\$2.77
002009C	SM-I END CLAMP - SIZE M, CLR	20	2.00	\$2.77
002012C	SM-I END CLAMP - SIZE N, CLR	20	2.00	\$2.77

Part No.	Description	Package Quantity	Ship Wt. Lbs.	List Price Ea.
002101C	SM-I MID CLAMP - SIZE, A, CLR	20	2.00	\$2.77
002102C	SM-I MID CLAMP - SIZES, BC, CLR	20	2.00	\$2.77
002103C	SM-I MID CLAMP - SIZES, DK, CLR	20	2.00	\$2.77
002104C	SM-I MID CLAMP - SIZES, EFJMN, CLR	20	2.00	\$2.77

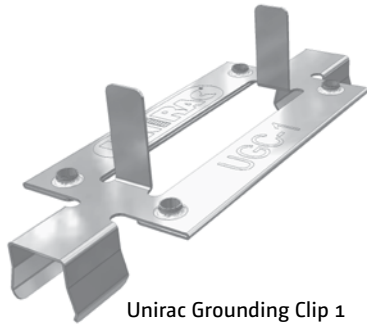
Module Mounting

Prices and specifications are subject to change without notice.

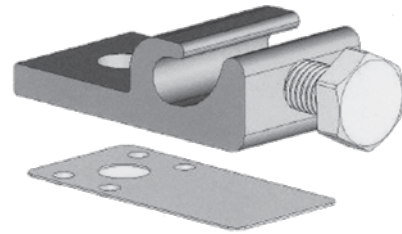
Page

11

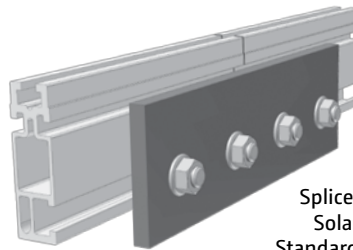
SOLARMOUNT



Unirac Grounding Clip 1
PAGE 13



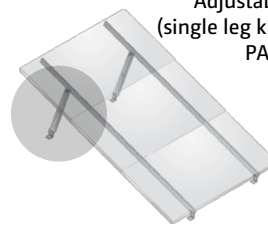
WEEB Grounding Lug
PAGE 13



Splice Plate for
SolarMount
Standard and Heavy
Duty Rail
PAGE 13

Also Available:

- Fixed Tilt Leg Kit
SEE PAGE 13



Adjustable Tilt Legs
(single leg kit - two shown)
PAGE 13

Prices and specifications are subject to change without notice.

SOLARMOUNT

SPLICE PLATE

Order one splice whenever two rail segments are to be joined into a single rail. See also SPLICE BARS on page 14.

Part No.	Description	Package Quantity	Ship Wt. Lbs.	List Price Ea.
303003C	SM SPLICE PLATE CLR	20	14.00	\$14.25

GROUNDING HARDWARE

Part No.	Description	Package Quantity	Ship Wt. Lbs.	List Price Ea.
308001S	SM GROUND CLIP #1, UGC-1 SS,	20	1.00	\$2.29
008002S	GROUND WEEBLUG #1	20	2.00	\$11.15

ADJUSTABLE TILT LEGS - SINGLE LEG KIT

Each leg contains a square tube, a strut insert, and fasteners.
Note that usable lengths are 2" less than stated because holes are drilled 1" from ends.

Part No.	Description	Package Quantity	Ship Wt. Lbs.	List Price Ea.
307107M	SM ADJ TILT LEG, 8-12", W/HDW	1	3.00	\$19.95
307115M	SM ADJ TILT LEG, 18-30", W/HDW	1	3.00	\$22.58
307120M	SM ADJ TILT LEG, 26-44", W/HDW	1	7.00	\$30.00
307134M	SM ADJ TILT LEG, 40-72", W/HDW	1	10.00	\$83.00

NOTE - LOW PROFILE SOLUTIONS

Low profile solutions require the addition of two (2) L-foot for each leg. See page 25.

FIXED TILT LEG KIT

Each leg kit contains fixed length leg and fasteners.
Note that usable lengths are 2" less than stated because holes are drilled 1" from ends.

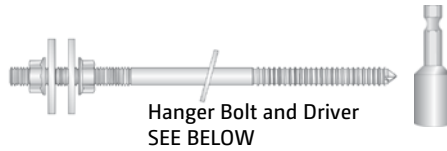
Part No.	Description	Package Quantity	Ship Wt. Lbs.	List Price Ea.
307007M	SM FIXED TILT LEG, 7", W/HDW	1	1.00	\$15.75
307015M	SM FIXED TILT LEG, 15", W/HDW	1	2.00	\$19.95
307020M	SM FIXED TILT LEG, 20", W/HDW	1	2.00	\$22.58
307034M	SM FIXED TILT LEG, 34", W/HDW	1	3.00	\$30.00

NOTE - LOW PROFILE SOLUTIONS

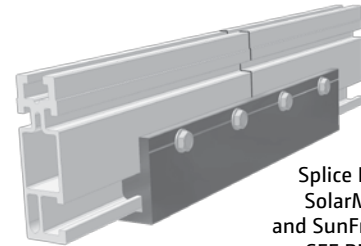
Low profile solutions require the addition of two (2) L-foot for each leg. See page 25.

Prices and specifications are subject to change without notice.

SOLARMOUNT SUNFRAME



Hanger Bolt and Driver
SEE BELOW



Splice Bar for
SolarMount
and SunFrame Rail
SEE BELOW

SOLARMOUNT SUNFRAME

HANGER BOLTS

Used in conjunction with L-feet, 8-inch hanger bolts support SolarMount rails above tile or corrugated metal roofs. A driver allows easy insertion into $\frac{3}{16}$ -inch pilot holes in the rafters.

Part No.	Description	Package Quantity	Ship Wt. Lbs.	List Price Ea.
030021C	HDW HANGER BOLT 3/8", W/HDW	20	5.00	\$13.44
030022C	HDW HANGER BOLT DRIVER 3/8"	1	1.00	\$23.63

SPLICE BARS

CLR = Clear Anodized

DRK = Dark Bronze Anodized (BLACK)

Part No.	Description	Package Quantity	Ship Wt. Lbs.	List Price Ea.
303001C	SM & SF SPLICE BAR SERRATED CLR	20	10.00	\$5.90
303002D	SM & SF SPLICE BAR SERRATED DRK	20	10.00	\$6.20

Prices and specifications are subject to change without notice.

Page

14

SOLARMOUNTi



Splice Kit
SEE BELOW



UGC-2
Grounding
Clip
SEE BELOW

Also Available:

- Enphase Mounting Kit
SOLARMOUNTi only
SEE BELOW

SOLARMOUNTi

SPLICE KITS

Available with and without WEEB 9.5 Grounding Solution

Part No.	Description	Package Quantity	Ship Wt. Lbs.	List Price Ea.
003000S	SM-I SPLICE KIT W/HDW	20	2.00	\$3.88
003001S	SM-I SPLICE KIT & GROUND W/HDW	20	2.00	\$7.76

GROUNDING CLIPS & ENPHASE MOUNTING

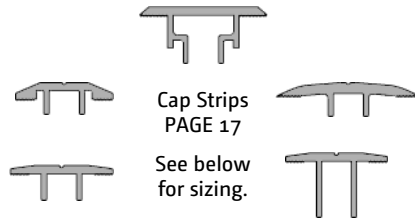
Part No.	Description	Package Quantity	Ship Wt. Lbs.	List Price Ea.
008005S	SMI GROUND CLIP, UGC-2, SS	20	1.00	\$2.30
008000C	SM-I ENPHASE MOUNTING KIT	20	2.00	\$2.58

Accessories

Prices and specifications are subject to change without notice.

Page

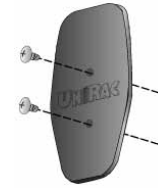
SUNFRAME



Cap Strips
PAGE 17

See below
for sizing.

Screws sold
separately -
SEE PAGE 18



End Cap
PAGE 18



SunFrame
L-foot
Adjusting
Slider
PAGE 18

SUNFRAME

Cap Strip and Screw Sizing

Unirac Letter	Module Thickness			Screw Length	
	Millimeter		Inches		
A	24 - 26		0.94 - 1.02	NOT AVAILABLE	
B	30 - 32		1.18 - 1.26	NOT AVAILABLE	
C	34 - 36		1.34 - 1.42	3/4"	
D	38 - 40		1.50 - 1.57	3/4"	
K	39 - 41		1.54 - 1.61	NOT AVAILABLE	
J	41 - 43		1.61 - 1.69	3/4"	
F	45 - 47		1.77 - 1.85	1"	
M	47 - 49		1.85 - 1.93	NOT AVAILABLE	
E	50 - 52		1.97 - 2.05	1-1/4"	
N	57 - 59		2.24 - 2.32	NOT AVAILABLE	
H & L	Sanyo lipped modules			H=3/4" L=1-1/2"	L= Bifacial ; H = All other Sanyo
G	Sharp lipped modules			1"	

NOTE: Screws sold separately. See page 18.

Prices and specifications are subject to change without notice.

SUNFRAME

CAP STRIPS

CLR = Clear Anodized

DRK = Dark Bronze Anodized (BLACK)

NOTE: Screws sold separately. See page 18.

Part No.	Description	Package Quantity	Ship Wt. Lbs.	List Price Ea.
202001C	SF CAPSTRIP, 192", SIZE C, CLR	8	35.00	\$52.63
202001D	SF CAPSTRIP, 192", SIZE C, DRK	8	35.00	\$60.25
202002C	SF CAPSTRIP, 192", SIZE D, CLR	8	35.00	\$52.63
202002D	SF CAPSTRIP, 192", SIZE D, DRK	8	35.00	\$60.25
202003C	SF CAPSTRIP, 192", SIZE E, CLR	8	35.00	\$60.25
202003D	SF CAPSTRIP, 192", SIZE E, DRK	8	35.00	\$72.50
202004C	SF CAPSTRIP, 192", SIZE F, CLR	8	35.00	\$58.75
202004D	SF CAPSTRIP, 192", SIZE F, DRK	8	35.00	\$70.13
202005D	SF CAPSTRIP, 192", SIZE G, DRK	8	35.00	\$81.63
202006D	SF CAPSTRIP, 192", SIZE H, DRK	8	35.00	\$74.63
202007C	SF CAPSTRIP, 192", SIZE L, CLR	8	35.00	\$64.50
202007D	SF CAPSTRIP, 192", SIZE L, DRK	8	35.00	\$77.50
202008D	SF CAPSTRIP, 192", SIZE J, DRK	8	35.00	\$58.75

Prices and specifications are subject to change without notice.

SUNFRAME

CAP STRIP SCREWS

See page 16 for sizing.

CLR = Clear Anodized

DRK = Dark Bronze Anodized (BLACK)

Part No.	Description	Package Quantity	Ship Wt. Lbs.	List Price Ea.
209000C	SF CAP SCREW, 1/4 X 3/4" CLR	100	2.00	\$0.69
209000D	SF CAP SCREW, 1/4 X 3/4" DRK	100	2.00	\$0.93
209001C	SF CAP SCREW, 1/4 X 1", CLR	100	2.00	\$0.76
209001D	SF CAP SCREW, 1/4 X 1", DRK	100	2.00	\$1.01
209002C	SF CAP SCREW, 1/4 X 1.25", CLR	100	2.00	\$0.83
209002D	SF CAP SCREW, 1/4 X 1.25", DRK	100	2.00	\$1.08
209003C	SF CAP SCREW, 1/4 X 1.5", CLR	100	2.00	\$0.91
209003D	SF CAP SCREW, 1/4 X 1.5", DRK	100	2.00	\$1.14

SUNFRAME L-FOOT ADJUSTING SLIDER

Mill finish. Includes 2 lag bolts with flat washers and s/s footing bolt with flange nut.

Part No.	Description	Package Quantity	Ship Wt. Lbs.	List Price Ea.
204001C	SF L-FOOT ADJUSTING SLIDER	20	18.00	\$15.15

END CAP

UV resistant plastic, with matching screws.

Part No.	Description	Package Quantity	Ship Wt. Lbs.	List Price Ea.
202000D	SF END CAP, THREADED, DARK PLASTIC	20	1.00	\$3.40

Prices and specifications are subject to change without notice.

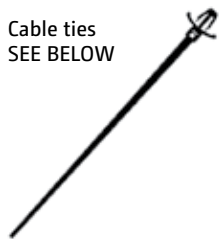
MULTI-SOLUTION



Also Available:

- Standard Stainless Steel Fasteners and Washers - PAGE 20
- Security Hardware - PAGE 20

Wire Management Clips
SEE BELOW



Cable ties
SEE BELOW



Shims
SEE BELOW

MULTI-SOLUTION

WIRE MANAGEMENT CLIPS

Stainless steel wire management clip that can be used with any module and Unirac mounting system.

Part No.	Description	Package Quantity	Ship Wt. Lbs.	List Price Ea.
008003S	ONE WIRE CLIP, SS	500	7.00	\$0.50
008004S	TWO WIRE CLIP, SS	500	7.00	\$0.53

CABLE TIES AND SHIMS

Cable ties fit into 1/4 -inch holes drilled along rails. Shims level or raise standoffs and L-feet and precisely align rails. Horseshoe shims come in three color-coded thicknesses. Our tapered shim is particularly useful in leveling.

Part No.	Description	Package Quantity	Ship Wt. Lbs.	List Price Ea.
309001D	PUSH MOUNT CABLE TIE BLK	100	1.00	\$0.30
009001D	SHIM 1 1/2" X 2" X 1/16, BLUE	20	1.00	\$0.21
009002D	SHIM 1 1/2" X 2" X 1/4, BLK	20	1.00	\$0.32
009003D	SHIM 1 1/2" X 2" X 1/8, RED	20	1.00	\$0.26
009004D	SHM 1.5"X3 3/8", TAPERED BLK	20	1.00	\$0.62

Prices and specifications are subject to change without notice.

MULTI-SOLUTION

STANDARD STAINLESS STEEL FASTENERS AND WASHERS

Avoid chasing fasteners after job-site drop. Frequent users can keep spares handy in their toolboxes.

CLR = Clear Finish

DRK = Dark Finish

Part No.	Description	Package Quantity	Ship Wt. Lbs.	List Price Ea.
330001C	T-BOLTS&NUTS, 1/4" X 2", CLR	20	1.00	\$1.50
330002D	T-BOLTS&NUTS, 1/4" X 2", DRK	20	1.00	\$1.75
330003C	T-BOLTS&NUTS, 1/4" X 2.5", CLR	20	1.00	\$1.75
330004D	T-BOLTS&NUTS, 1/4" X 2.5", DRK	20	1.00	\$2.00
030020C	FLAT WASHER, 5/16", CLR	20	1.00	\$0.12
030023C	LAG BOLT, 5/16 X 3.5	20	1.00	\$0.82

SECURITY HARDWARE

Security hardware dramatically increases the difficulty and time required for a thief to dismantle a PV array and steal its components. Breakaway nuts work well in conjunction with top mounting clamps and footing bolts.

Note that starhead bolt heads do not fit into SolarMount rail slots (where standard bolt heads are inaccessible). Use them where heads are exposed—with bottom mounting module clips, for example.

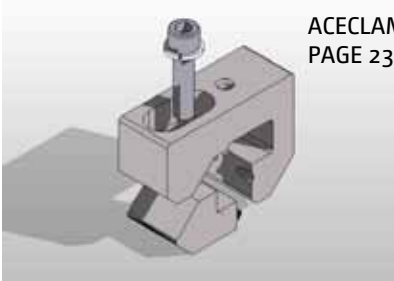
Part No.	Description	Package Quantity	Ship Wt. Lbs.	List Price Ea.
030002C	HDW BREAK NUT, 3/8"-16, AL	20	1.00	\$1.65
030003C	HDW BREAK NUT, 1/4"-20, AL	20	1.00	\$1.25
030024C	HDW STAR BOLT, 3/8"-16X1 1/4"	20	1.00	\$3.60
030025C	HDW STAR KEY, 1/4",	1	1.00	\$19.61
030026C	HDW STAR KEY, 3/8",	1	1.00	\$23.63

Prices and specifications are subject to change without notice.

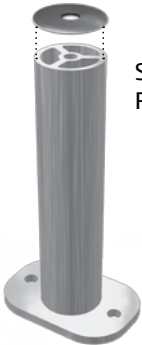
Page

20

SOLARMOUNT SOLARMOUNTi SUNFRAME



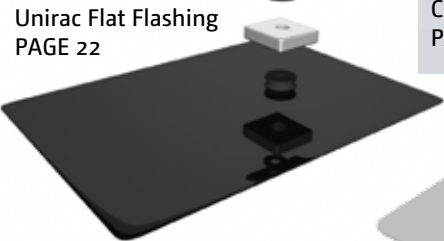
ACECLAMP JR
PAGE 23



Standoffs
PAGE 22

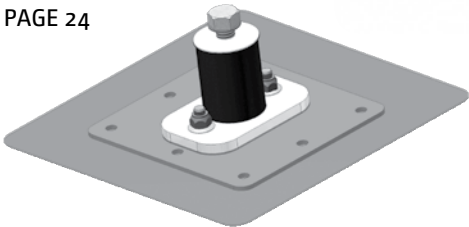


Creotecc Roof Tile Hook
PAGE 22



Unirac Flat Flashing
PAGE 22

FastFoot
FLASHING NOT INCLUDED
PAGE 24



Flashings
SEE BELOW

FLASHINGS

Fits standoff O.D. of 1⁵/₈ inches.
For pitched roofs up to 40 degrees. Not for hot mopped or built-up roofs
No-Calk® collar
By Oatey

Part No.	Description	Package Quantity	Ship Wt. Lbs.	List Price Ea.
004013C	FLASHING 18X18 SOFT ALUMINUM	12	12.00	\$16.50
004014C	FLASHING 12.5X8.75 GALVANIZED	12	12.00	\$8.00
004015C	FLASHING 12.5X8.75 ALUMINUM	12	12.00	\$11.59

Roof Attachments

Prices and specifications are subject to change without notice.

Page

SOLARMOUNT SOLARMOUNTi SUNFRAME

UNIRAC FLAT FLASHING

Flashing, attached gasket, washer, and square aluminum plate ONLY! No lag bolt or rail attachment piece included.

Part No.	Description	Package Quantity	Ship Wt. Lbs.	List Price Ea.
004010D	UNIRAC FLAT FLASHING	48	21.00	\$17.73

CREOTECC ROOF TILE HOOK

Creotecc roof tile hooks come in three different mount types. Front mount, side mount and top mount. For use with concrete tile or Spanish tile roofs.

Part No.	Description	Package Quantity	Ship Wt. Lbs.	List Price Ea.
004006C	TILE HOOK FRONT MOUNT, AL	20	20.00	\$32.42
004007C	TILE HOOK SIDE MOUNT, AL	20	20.00	\$32.42
004008C	TILE HOOK TOP MOUNT, AL	20	20.00	\$32.42

STANDOFFS

Shaft outside diameter = 1⁵/₈ inches.
Includes stainless steel hardware.

Part No.	Description	Package Quantity	Ship Wt. Lbs.	List Price Ea.
004300C	STANDOFF 3" - 2 PIECE ALUMINUM, CLR	24	20.00	\$13.57
004400C	STANDOFF 4" - 2 PIECE ALUMINUM, CLR	24	20.00	\$13.93
004600C	STANDOFF 6" - 2 PIECE ALUMINUM, CLR	24	20.00	\$15.98
004700C	STANDOFF 7" - 2 PIECE ALUMINUM, CLR	24	20.00	\$17.17

Prices and specifications are subject to change without notice.

SOLARMOUNT SOLARMOUNTi SUNFRAME

ACECLAMP JR

Seamed Metal Roof Mounting Solution

Purchase one ACECLAMP JR and one Mounting Kit per attachment, usually one per standing seam. Mounting Kit sizing chart on Page 9.

ACECLAMP JR. 1/4" is used with clamps sold separately below for direct attachment to standing seam metal roofs.

ACECLAMP JR. 3/8" is used to attach SolarMount, SOLARMOUNTi, or SunFrame rail to standing seam metal roofs.

Part No.	Description	Package Quantity	Ship Wt. Lbs.	List Price Ea.
004030M	ACECLAMP JR. 1/4" MILL	100	35.00	\$17.20
004031M	ACECLAMP JR. 3/8" MILL	100	35.00	\$18.50
004032M	END CLAMP MOUNTING KIT, SIZE A, CLR	100	19.00	\$6.00
004033M	END CLAMP MOUNTING KIT, SIZE B, CLR	100	19.00	\$6.00
004034M	END CLAMP MOUNTING KIT, SIZE C, CLR	100	19.00	\$6.00
004035M	END CLAMP MOUNTING KIT, SIZE D, CLR	100	19.00	\$6.00
004036M	END CLAMP MOUNTING KIT, SIZE E, CLR	100	19.00	\$6.00
004037M	END CLAMP MOUNTING KIT, SIZE F, CLR	100	19.00	\$6.00
004038M	END CLAMP MOUNTING KIT, SIZE G, CLR	100	19.00	\$6.00
004039M	END AND MID CLAMP MOUNTING KIT, SIZE H, CLR	100	19.00	\$6.00
004040M	END CLAMP MOUNTING KIT, SIZE J, CLR	100	19.00	\$6.00
004041M	END CLAMP MOUNTING KIT, SIZE K, CLR	100	19.00	\$6.00
004042M	MID CLAMP MOUNTING KIT, SIZE AB, CLR	100	19.00	\$6.00
004043M	MID CLAMP MOUNTING KIT, SIZE CDJK, CLR	100	19.00	\$6.00
004044M	MID CLAMP MOUNTING KIT, SIZE EF, CLR	100	19.00	\$6.00
004045M	MID CLAMP MOUNTING KIT, SIZE G, CLR	100	19.00	\$6.00

Prices and specifications are subject to change without notice.

SOLARMOUNT SOLARMOUNTi SUNFRAME

FASTFOOT HARDWARE AND ACCESSORIES

FastFoot DOES NOT INCLUDE flashings, DP1 concealer screws, DP4 concealer screws, anchors or ferrules - available below, separately.

Part No.	Description	Package Quantity	Ship Wt. Lbs.	List Price Ea.
004003C	FAST FOOT 3" ASSEMBLY	20	35.00	\$45.25
004004C	FAST FOOT 4" ASSEMBLY	20	37.00	\$45.75
004005C	FAST FOOT 7" ASSEMBLY	20	42.00	\$46.95
004012C	FLASHING #1 GALVALUME	50	1.00	\$6.89
004017D	FLASHING PEEL & STICK EPDM BLK	50	1.00	\$7.02
030001C	ANCHORS, #14	20	6.00	\$0.68
030004C	CONCEALER SCREW 1.5", DP1	100	5.00	\$0.25
030005C	CONCEALER SCREW 2", DP1	100	5.00	\$0.28
030006C	CONCEALER SCREW 2.75", DP4	100	5.00	\$0.56
030007C	CONCEALER SCREW 3", DP1	100	5.00	\$0.36
030008C	CONCEALER SCREW 3.75", DP4	100	5.00	\$0.62
030009C	CONCEALER SCREW 1.375", DP4	100	5.00	\$0.54
030010C	CONCEALER SCREW 4", DP1	100	5.00	\$0.44
030011C	CONCEALER SCREW 4.5", DP1	100	5.00	\$0.51
030012C	CONCEALER SCREW 4.75", DP4	100	5.00	\$0.75
030013C	CONCEALER SCREW 5", DP1	100	5.00	\$0.57
030014C	CONCEALER SCREW 5.75", DP4	100	5.00	\$0.81
030015C	CONCEALER SCREW 6", DP1	100	5.00	\$0.69
030016C	CONCEALER SCREW 6.75", DP4	100	5.00	\$0.87
030017C	CONCEALER SCREW 7", DP1	100	5.00	\$0.79
030018C	CONCEALER SCREW 7.75", DP4	100	5.00	\$0.95
030019C	FERRULES 48"	20	1.00	\$23.63

Prices and specifications are subject to change without notice.

SOLARMOUNT SUNFRAME

Serrated L-foot
SEE BELOW



Standoffs
PAGE 26

SOLARMOUNT SUNFRAME

SERRATED L-FOOT

Select finish to match rails. Includes stainless steel bolts and flange nuts. Lag bolts are not included.

CLR = Clear Anodized

DRK = Dark Bronze Anodized (BLACK)

Part No.	Description	Package Quantity	Ship Wt. Lbs.	List Price Ea.
304000C	SM L-FOOT SERRATED W/HDW, CLR	20	5.00	\$4.34
304000D	SM L-FOOT SERRATED W/HDW, DRK	20	5.00	\$4.54

Prices and specifications are subject to change without notice.

SOLARMOUNT SUNFRAME

STANDOFFS

O.D. of 1⁵/₈ inches.

Aluminum or zinc-plated steel

CLR = Clear Anodized

DRK = Dark Bronze Anodized (BLACK)

NOTE: Fasteners not included. See page 20.

Part No.	Description	Package Quantity	Ship Wt. Lbs.	List Price Ea.
004300C	STANDOFF 3" 2 PIECE ALUMINUM, CLR	24	18.00	\$13.57
004300D	STANDOFF 3" 2 PIECE ALUMINUM, DRK	24	18.00	\$13.57
004301G	STANDOFF 3" FLATTOP STEEL	24	42.00	\$18.08
004302G	STANDOFF 3" RAISED FLANGE STEEL	24	32.00	\$18.72
004400C	STANDOFF 4" 2 PIECE ALUMINUM, CLR	24	20.00	\$13.93
004400D	STANDOFF 4" 2 PIECE ALUMINUM, DRK	24	20.00	\$14.62
004401G	STANDOFF 4" FLATTOP STEEL	24	46.00	\$18.97
004402G	STANDOFF 4" RAISED FLANGE STEEL	24	36.00	\$20.78
004600C	STANDOFF 6" 2 PIECE ALUMINUM, CLR	24	24.00	\$15.98
004600D	STANDOFF 6" 2 PIECE ALUMINUM, DRK	24	24.00	\$16.72
004601G	STANDOFF 6" FLATTOP STEEL	24	52.00	\$19.69
004602G	STANDOFF 6" RAISED FLANGE STEEL	24	44.00	\$22.22
004700C	STANDOFF 7" 2 PIECE ALUMINUM, CLR	24	26.00	\$17.17
004700D	STANDOFF 7" 2 PIECE ALUMINUM, DRK	24	26.00	\$17.72
004701G	STANDOFF 7" FLATTOP STEEL	24	56.00	\$22.33
004702G	STANDOFF 7" RAISED FLANGE STEEL	24	50.00	\$24.00

Prices and specifications are subject to change without notice.

SOLARMOUNTi



One Flange Connector
SEE BELOW



Two Flange Connector
SEE BELOW

Also Available:

- QuickMount Flashing
SEE BELOW

SOLARMOUNTi

SOLARMOUNTi CONNECTOR

One and Two Flange Connectors

Two Flange Connection available with or without butyl

NOTE: Screws, lag bolts, etc. NOT INCLUDED. See Page 20.

Part No.	Description	Package Quantity	Ship Wt. Lbs.	List Price Ea.
004000M	SM-I 1 FLANGE CONNECTOR	20	4.00	\$7.23
004001M	SM-I 2 FLANGE CONNECTOR	20	4.00	\$7.94
004002C	SM-I 2 FLANGE CONNECTOR & BUTYL	20	5.00	\$8.94

QUICKMOUNT FLASHING

Aluminum

CLR = Clear

DRK = Black

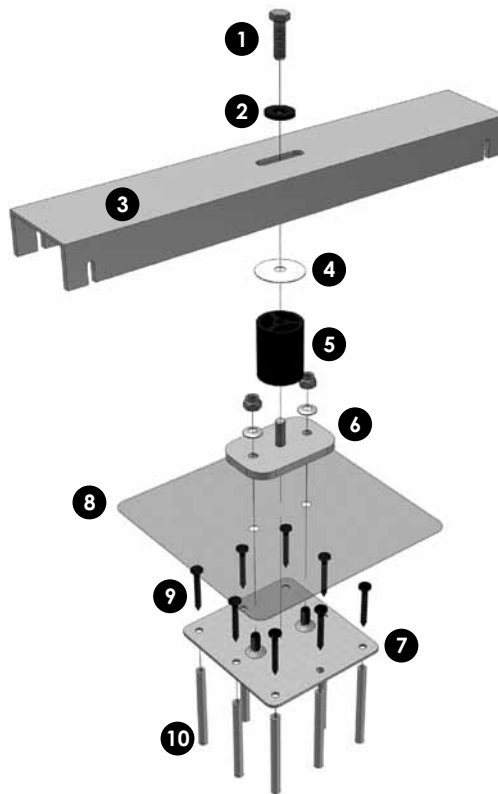
NOTE: Screws, lag bolts, connector hardware, etc. NOT INCLUDED. See page 20.

Part No.	Description	Package Quantity	Ship Wt. Lbs.	List Price Ea.
004011C	QUICKMOUNT FLASHING 9.5X12.5 CLR	18	13.00	\$31.61
004011D	QUICKMOUNT FLASHING 9.5X12.5 DRK	18	13.00	\$31.61

Roof Attachments

Prices and specifications are subject to change without notice.

RAPIDRAC G10



RapidFoot:

- 1. 3/8" x 1-1/4" Bolt
- 2. 3/8" x 1/8" x 1-1/2" Washer
- 3. Clamp Bar
- 4. EPDM Washer
- 5. Standoff
- 6. Top Plate
- 7. Base Plate

Accessories (sold separately):

- 8. Flashing
- 9. Concealer Screw
- 10. Ferrules

(Note: For concrete roofs, Scru-lead anchors must be used.)

RAPIDFOOT HARDWARE AND ACCESSORIES
PAGE 29

Prices and specifications are subject to change without notice.

Page

28

RAPIDRAC G10

RAPIDFOOT HARDWARE AND ACCESSORIES

RapidFoot DOES NOT INCLUDE flashings, DP1 concealer screws, DP4 concealer screws, anchors or ferrules - available below, separately.

Part No.	Description	Package Quantity	Ship Wt. Lbs.	List Price Ea.
622069C	RAPIDFOOT ASSEMBLY	1	5.00	\$55.00
004012C	FLASHING #1 GALVALUME	50	1.00	\$6.89
004017D	FLASHING PEEL & STICK EPDM BLK	50	1.00	\$7.02
030001C	ANCHORS, #14	20	6.00	\$0.68
030004C	CONCEALER SCREW 1.5", DP1	100	5.00	\$0.25
030005C	CONCEALER SCREW 2", DP1	100	5.00	\$0.28
030006C	CONCEALER SCREW 2.75", DP4	100	5.00	\$0.56
030007C	CONCEALER SCREW 3", DP1	100	5.00	\$0.36
030008C	CONCEALER SCREW 3.75", DP4	100	5.00	\$0.62
030009C	CONCEALER SCREW 1.375", DP4	100	5.00	\$0.54
030010C	CONCEALER SCREW 4", DP1	100	5.00	\$0.44
030011C	CONCEALER SCREW 4.5", DP1	100	5.00	\$0.51
030012C	CONCEALER SCREW 4.75", DP4	100	5.00	\$0.75
030013C	CONCEALER SCREW 5", DP1	100	5.00	\$0.57
030014C	CONCEALER SCREW 5.75", DP4	100	5.00	\$0.81
030015C	CONCEALER SCREW 6", DP1	100	5.00	\$0.69
030016C	CONCEALER SCREW 6.75", DP4	100	5.00	\$0.87
030017C	CONCEALER SCREW 7", DP1	100	5.00	\$0.79
030018C	CONCEALER SCREW 7.75", DP4	100	5.00	\$0.95
030019C	FERRULES 48"	20	1.00	\$23.63

Prices and specifications are subject to change without notice.



THE
U-CLINOMETER

See Page 2