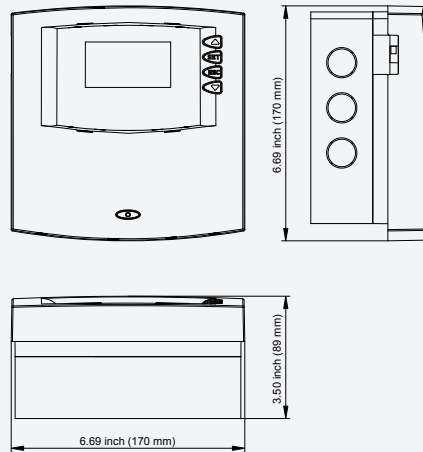




Technical data



6 INPUTS **3** OUTPUTS



**Spezialized
for the USA**
**Made in
Germany**

Steca is
„ISO9001“
and
„ISO14001“
certified and
registered

Steca TR 0603mc U

The new TR 0603mc U solar thermal controller combines the features of the already successful TR 0502 and TR 0603 temperature differential controllers.

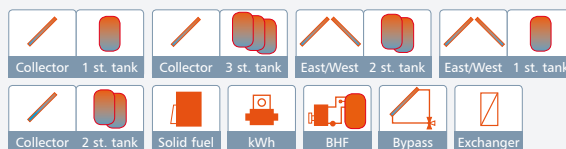
As a further highlight, the TR 0603mc U stores the system's operational data on an SD memory card, which can be used for data evaluation purposes. The 28-programmed systems and numerous additional functions allow universal use of the controller. The large display panel shows the animated control circuits, which allow you to view the operating conditions of each system. The TR 0603mc U has 6 inputs for recording temperature or pulse values, as well as an additional "Direct Sensor" input for combined temperature and flow rate measurement. Pumps and switching valves are controlled by 3 outputs, some of which can be RPM controlled.



Data logging on SD card

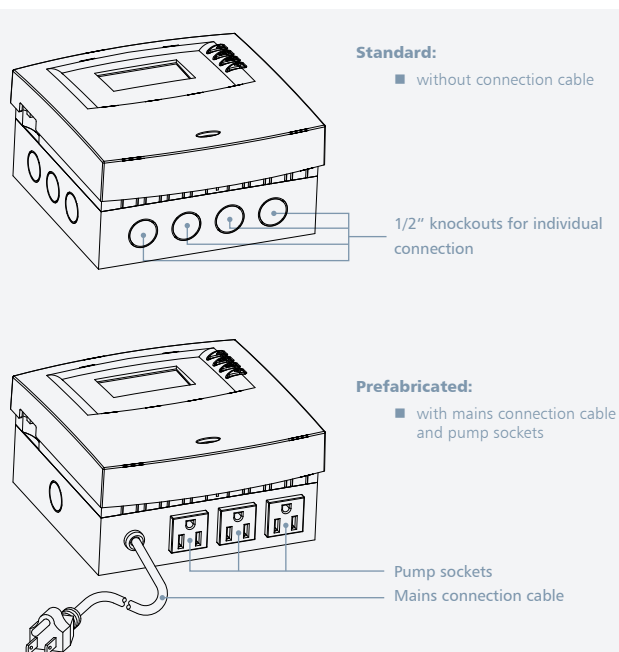
The TR 0603mc stores the solar thermal system's operational data on an SD card. This can be used for evaluation purposes.

Temperature Differential Controller TR 0603mc	
Operating voltage	120 VAC, 60 Hz [optional 240 VAC, 60 Hz]
Max. own consumption	≤ 4 W
Inputs	6 5 x temperature recording (Pt1000), 1 x temperature recording or pulse
Additional input	1 x "Direct Sensor" (temperature/flow rate)
Outputs	3 1 x relay switched output, max. 0.5 HP (120 V~) 2 x triac output for speed control, max. 0.15 HP (120 V~)
Additional output	1 x (fault reporting output)
Line cord	7', 18 AWG rated at 221 °F
Number of pre-defined hydraulic schemes	28
Interfaces	SD card, RS232
Data logging	SD card
Permitted ambient temperature	32 °F ... +113 °F (0 °C ... +45 °C)
Display	animated graphic LCD with backlighting
Protection class	IP 20/DIN 40050
Dimensions l x w x h	6.69 x 6.69 x 3.50 inch (170 x 170 x 89 mm)



Product features:

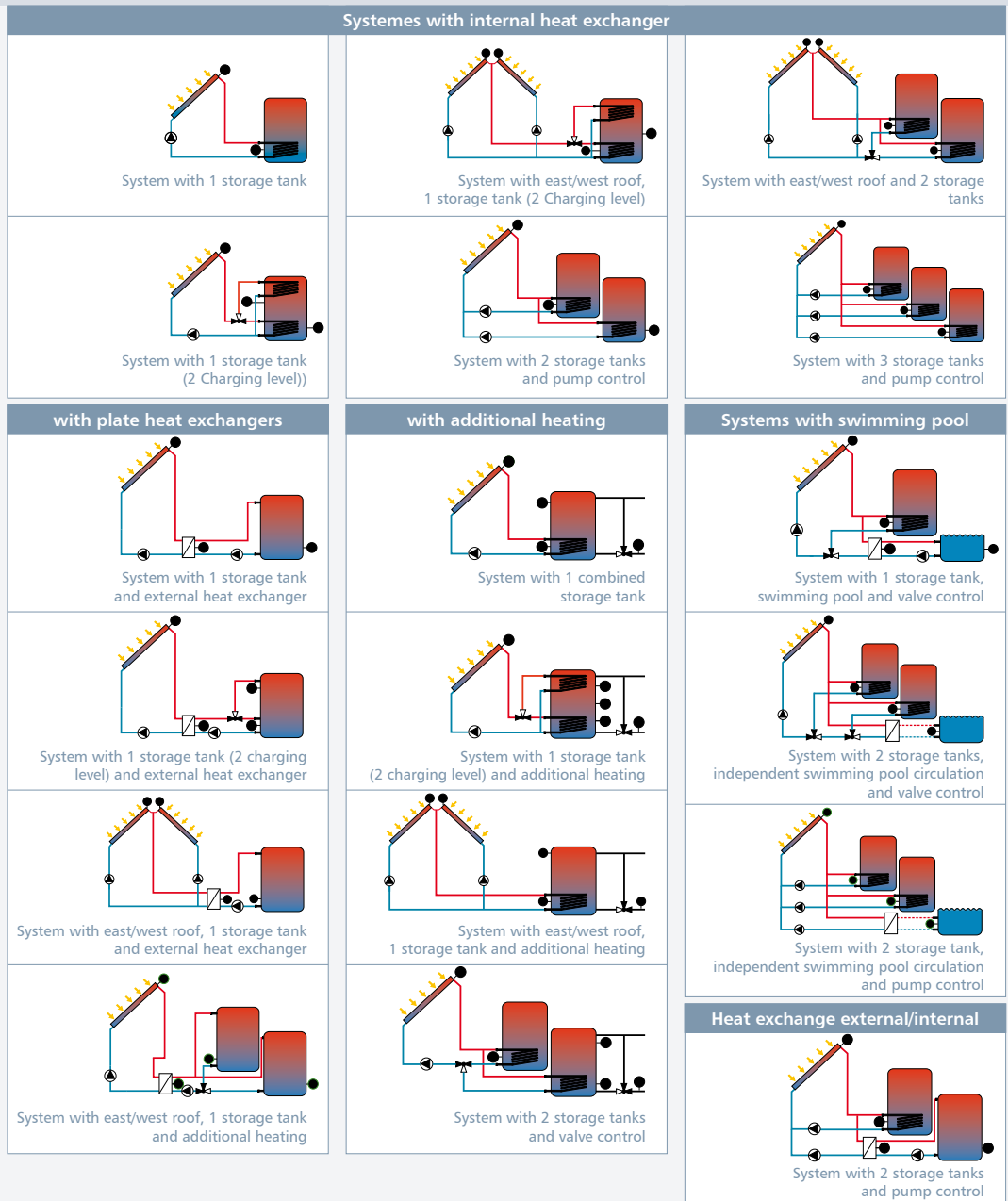
- Animated LCD display with backlight
- Heating return increase
- Thermostat and differential thermostat function
- Timer and holiday (storage recool) functions
- Heat meter (impulse generator / Direct Sensor)
- Circulation function
- Back-up heating
- Solid fuel boiler back-up heating
- Tube collector function
- Anti-freeze function
- Interval function
- Rapid storage tank loading
- Reduction of system stagnation phases
- Anti-legionella function
- Fault diagnosis and fault reporting output
- Bypass switching
- Data logging on SD card
- Seasonal systems (loading of pool / storage tank according to the time of the year)
- Multi-language menu navigation



Standard:
■ without connection cable

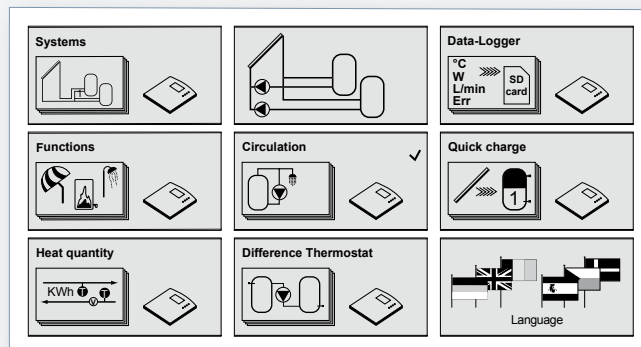
Prefabricated:
■ with mains connection cable and pump sockets

System examples



Graphic display

The new TR 0603mc U solar thermal controller is also equipped with a fully animated graphic display. This serves to represent the different system layouts and numerous functions in a clearly laid out display that is easy to understand. The strength of this controller lies in its ease of use and high level of functionality.



Display examples

The display examples shown here are merely a selection, designed to show the many and diverse function displays of the TR 0603mc U controller.