

Available in 80 and 120 Gallon Side Connect and Top Connect Models

► 6-Year Limited Tank and Parts Warranty*

- Brass drain valve
- Choice of two models...storage tank or single element water heater, both specially equipped for installation with residential direct solar systems
- Special threaded stud located near the outlet for attachment of tank sensors
- Temperature and pressure relief valve included
- Collector feed and return fittings located at front of tank for convenient installation
- Isolated tank design for better heat retention
- High efficiency heating element
- Rheemglas® tank lining resists corrosion and prolongs tank life
- Cold water inlet brings cold water to tank bottom to prevent mixing with heated water
- Anode rod equalizes aggressive water action for prolonged tank life
- Cold water inlet, hot water outlet, relief valve and anode rod at top of tank for easy access and fast, economical installation
- Automatic temperature control
- Over temperature protector

*See Residential Warranty Information Brochure for complete warranty information.

Energy Factor and Average Annual Operating Costs based on D.O.E. (Department of Energy) test procedures. D.O.E. national average fuel rate electricity 8.6¢/KWH.



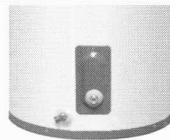
DESCRIPTION				ROUGHING IN DIMENSIONS (SHOWN IN INCHES)			ENERGY INFORMATION
T Y P E	GAL. CAP.	MODEL NUMBER	ELEMENT WATTAGE UPPER	HEIGHT A	DIAMETER B	APPROX. SHIP WT. (LBS.)	APPROX. R- FACTOR
SIDE CONNECT							
T A L L	80	81VR80-1	4500 W*	58-3/4	24-1/2	192	R-17.3
	120	81VR120-1	4500 W*	62	28-1/4	336	R-16.7
	80	81VR80-T	Storage Only	58-3/4	24-1/2	192	R-17.3
	120	81VR120-T	Storage Only	62	28-1/4	336	R-16.7
TOP CONNECT							
T A L L	80	81VR80TC-1	4500 W*	58-3/4	24-1/2	192	R-17.3
	120	81VR120TC-1	4500 W*	62	28-1/4	336	R-16.7
	80	81VR80TC-T	Storage Only	58-3/4	24-1/2	192	R-17.3
	120	81VR120TC-T	Storage Only	62	28-1/4	336	R-16.7

* Heaters furnished with standard 240 volt AC, single phase non-simultaneous wiring and 4500 watt heating element.

- If heating elements of different wattages than those shown are demanded by zone requirements, they must be specifically requested.
- Solaraide models meet all current requirements for solar storage tanks.
- The tanks are Rheemglas lined and are designed to operate up to 150 PSI.

SIDE CONNECT

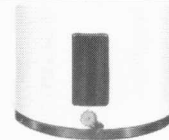
Raised 7" from the bottom, the outlet to the solar collector panel helps prevent scale and sediment from entering and circulating through the solar system.



A special threaded stud is also welded to the tank near the outlet for attachment of tank sensors.

TOP CONNECT

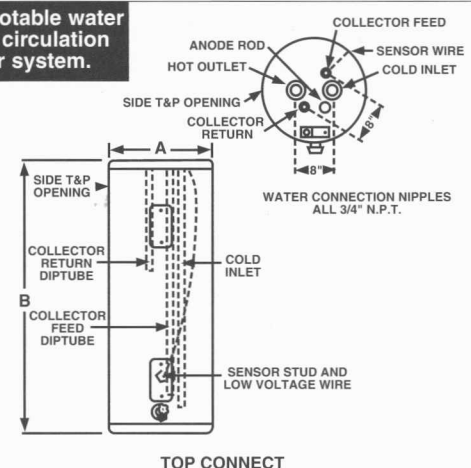
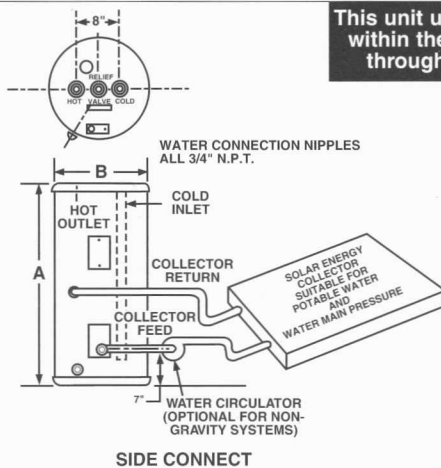
A special threaded stud is also welded to the tank behind the lower cavity opening. Low voltage sensor wire is run from this point inside the jacket and out the top for easy control connection.



These units are designed to meet or exceed ANSI (American National Standards Institute) requirements and have been tested according to D.O.E. test procedures and meet or exceed the energy efficiency requirements of NAECA, ASHRAE standard 90, BOCA Code and all state energy efficiency performance criteria for energy consuming appliances.

Before purchasing this appliance, read important energy cost and efficiency information available from your supplier.

This unit uses the potable water within the tank for circulation through the solar system.



In keeping with its policy of continuous progress and product improvement, Rheem reserves the right to make changes without notice.